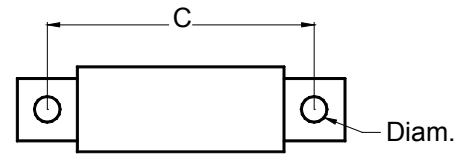
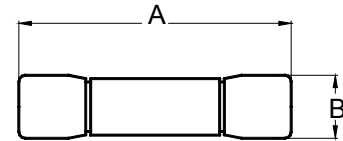


MODEL NUMBER	AMPS	OVERALL DIMENSIONS			
		A	B	C	DIAM.
300 VAC OR LESS FOR POWER CONTROL TO 30 AMPS					
49A25-10	10	52mm	14mm		
49A25-15	15	52mm	14mm		
49A25-20	20	52mm	14mm		
49A25-30	30	52mm	14mm		
*SOLD ONLY IN BOXES OF 10					
600 VAC OR LESS FOR POWER CONTROL TO 30 AMPS					
49B70-10	10	52mm	14mm		
49B70-20	20	52mm	14mm		
49B70-30	30	52mm	14mm		
*SOLD ONLY IN BOXES OF 10					
ALL FUSE REQUIREMENTS 50 AMPS AND GREATER					
49A50-50	50			62mm	8mm
49A50-80	80			73mm	8mm
49A50-125	125			73mm	8mm
49A50-150	150			73mm	8mm
49A50-250	250			83mm	10mm
49A50-350	350			83mm	10mm
49A50-450	450			86mm	10mm
49A50-600	600			86mm	10mm
49A50-800	800			114mm	14mm
18TBP/TB CONTROLS					
49C25-5	5	33mm	6mm		
49C25-10	10	33mm	6mm		
49C25-15	15	33mm	6mm		
49B25-30	30	52mm	14mm		
*SOLD ONLY IN BOXES OF 10					
CONTROL FUSES					
49D60-1/4	1/4	38mm	10mm		
49D25-3/10	3/10	38mm	10mm		
49D60-1/2	1/2	38mm	10mm		



NOTES:

1. ONLY listed fuses are factory approved for proper protection of SCRs from short circuit faults.
2. 2-millisecond, sub-cycle fuses are factory coordinated with SCRs by factory conducted short circuit tests.
3. Use of any other fuses, including "I²t", "Fast-acting", or other types not listed here, voids all warranties.
4. Fuse clearing when load is applied to control indicates overcurrent condition at the load, or improperly sized control. Correct load fault before replacing fuses and re-energizing control, or select properly sized fused control.

FOR Model 11D, 11E, 18D, 18DZ, 18E, 18EZ, 36D, 36E POWER CONTROLS

UNIT NAMEPLATE RATING		RECOMMENDED FUSE
INPUT VOLTAGE	MAX AMPS	PAYNE ENGINEERING
120 TO 240 VAC	10A	49A25-10
	15A	49A25-15
	20A	49A25-20
	30A	49A25-30
277 TO 480 VAC	10A	49B70-10
	20A	49B70-20
	30A	49B70-30
120 TO 600 VAC	50A	49A50-50
	80A	49A50-80
	120A	49A50-125
	150A	49A50-150
	250A	49A50-250
	350A	49A50-350
	450A	49A50-450
	600A	49A50-600
1200A	(2) 49A50-600	

FOR Model 18D-H, 18E-H, 18D-SW, 18E-SW POWER CONTROLS

UNIT NAMEPLATE RATING		RECOMMENDED FUSE
INPUT VOLTAGE	MAX AMPS	PAYNE ENGINEERING
120 TO 240 VAC	10A	49A25-30
	30A	49A25-80
277 TO 480 VAC	10A	49B70-30
	30A	49B70-80
120 TO 600 VAC	80A	49A50-150
	150A	49A50-250
	350A	49A50-600
	600A	49A50-600

FOR Model 18TBP/TB, 36TBP POWER CONTROLS

UNIT NAMEPLATE RATING		RECOMMENDED FUSE
INPUT VOLTAGE	MAX AMPS	PAYNE ENGINEERING
120/240 VAC	5A	49C25-5
	10A	49C25-10
	15A	49C25-15
	25A	49A25-30